



Electromagnetic & Electric Rotary Vibrators

MOUNTING INSTRUCTIONS

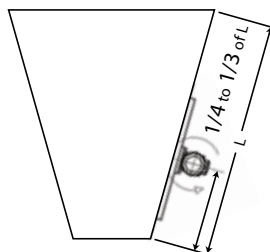
MOUNTING PLACEMENT

Mount vibrators on the lower portion of the bin or hopper. Depending on the hopper's shape, placement can range from 1/8 to a half way from its discharge. Illustrations show the recommended placement for each. Never mount a vibrator directly to the hopper. Vibrators must be bolted to a channel that is stitch welded to the side of the hopper, and secured with a safety cable.



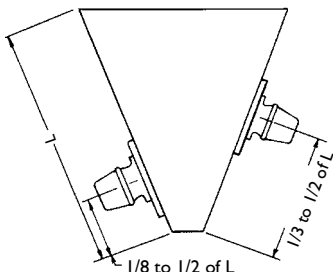
Electromagnetic

ERV



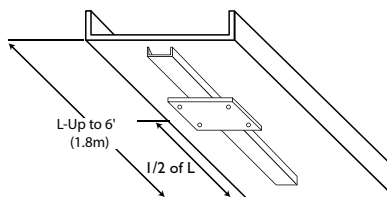
RECTANGLE OR CONICAL

Mount on channel with the vibrator located 1/4 to 1/3 the distance from the hopper discharge.



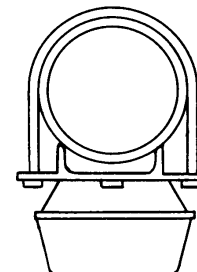
MULTIPLE VIBRATORS

If additional vibration is required, a second unit can be mounted on the opposite side at a different height.



CHUTES

Mount vibrator on channel in the middle of the chute. For longer chutes, more than one vibrator may be required. Vibrators may need to be shifted to achieve optimal flow. Refer to the chart on page 2 for additional detail on mounting channel size.



ROUND PIPE

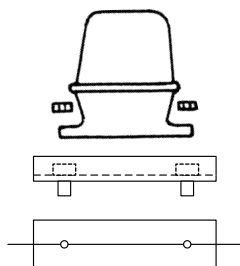
For fixed position, stitch-weld mounting channel to pipe. For movable unit, weld ears to channel and secure with two U Bolts.

HARDWARE & WELDING

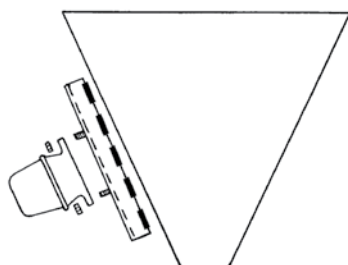
After welding, check the channel with a straight edge between mounting studs for flatness. If a crown in the channel is evident, grind the area smooth to insure a flat surface to surface contact. A bowed channel can cause the ears on the vibrator to break or cause loss of vibration.

Electromagnetic

Drill holes through mounting channel, insert bolts from inside and tack weld heads.

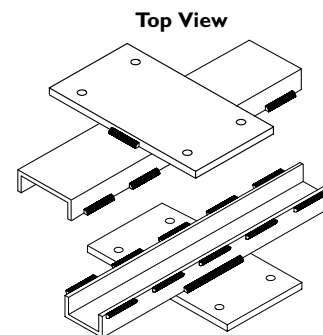


Welds should stop 1" from ends of channel to prevent cracking. Welds approximately 1/4" Long on 1-1/2" centers. Stitch-weld channel to hopper wall, nuts on outside.

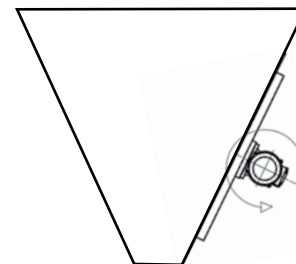


Electric Rotary Vibrators

A Mounting Plate must be used to ensure proper stability for the vibrator. Always start and stop welds 1 inch from ends to prevent heat concentration. Then weld 2 to 3 inches, skip 1 to 2 inches and repeat until the plate is securely mounted. Be sure all welding is done by a certified welder.



Note: Electric Rotary Vibrators are down acting and should be positioned perpendicular to the channel.



Always secure with safety cable or chain

VIBRATOR MOUNTING HARDWARE SPECIFICATIONS

Electromagnetic Vibrator Model

Vibrator	Channel		Approximate Length		Mounting Bolts	
	in	mm	in	mm	in	mm
D20N	2	51	12	305	3/8-16 x 1-1/2 lg	m10-1.5 pitch x 40mm
D30N, D30P, D30S	2	51	12	305	1/2-13 x 1-1/2	m12-1.75 pitch x 40mm
D40P and D40S	4	102	24-30	610-762	1/2-13 x 1-3/4	m12-1.75 pitch x 45mm
D50P and D50S	4	102	24-30	610-762	1/2-13 x 1-3/4	m12-1.75 pitch x 45mm
D55P and D55S	10	254	36	914	5/8-11 x 2	m16-2.00 pitch x 50mm
D60U	15	381	36-48	914-1219	1/2-13 x 2-1/2	m12-1.75 pitch x 60mm
D70U	18	457	36-48	914-1219	3/4-10 x 2-1/2	m20-2.50 pitch x 60mm

NOTE: All mounting bolts to be SAE Grade 5.

Dimensions and specifications to change without notice.

Electric Rotary Vibrator Model

Typical for hopper or chute application

Vibrator	Mounting Bolts		Channel		Approximate Length		Mounting Plate Thickness	
	Screw	Clamping Torque ft/lb	in	mm	in	mm	in	mm
	Metric: Imperial	Imperial						
ERV 160/2	M8: 3/8"	16.5	3	76	18	457	1/4 to 3/8	6.4 to 9.5
ERV 220/2	M8: 3/8"	16.5	3	76	18	457	1/4 to 3/8	6.4 to 9.5
ERV 440/2	M8: 3/8"	16.5	3	76	24	610	1/4 to 3/8	6.4 to 9.5
ERV 690/2	M12: 1/2"	58	4	102	36	914	1/2	12.7
ERV 890/2	M10: 3/8"	33	4	102	42	1067	1/2	12.7
ERV 1200/2	M10: 3/8"	33	6	152	48	1219	5/8	16

NOTE: Refer to the Eriez Installation and Operation Manual for additional details.

Dimensions and specifications to change without notice.

Eriez and Eriez Magnetics are registered trademarks of Eriez Manufacturing Co, Erie, PA

©2019 Eriez Magnetics All Rights Reserved



World Authority in Separation Technologies

Headquarters: 2200 Asbury Road, Erie, PA 16506-1402 U.S.A.

Telephone: 814-835-6000 • Fax: 814-838-4960

www.eriez.com e-mail: eriez@eriez.com

Manufacturing Facilities: AUSTRALIA • BRAZIL • CANADA • CHINA • INDIA • JAPAN • MEXICO • SOUTH AFRICA • UNITED KINGDOM • UNITED STATES

