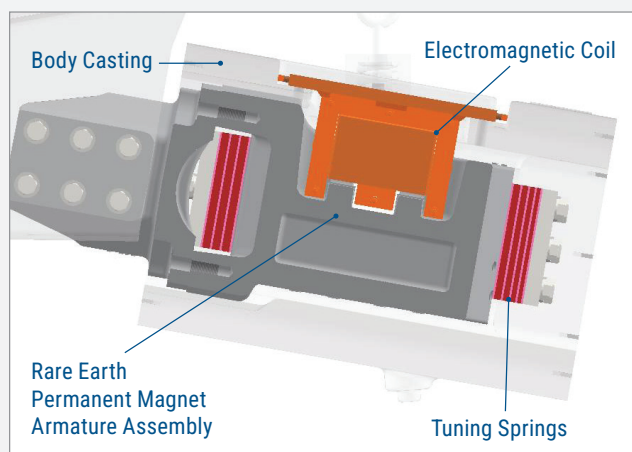


## 100B-HC High Capacity Electromagnetic Vibratory Feeder

**Feeds Up To  
894 Tons (798MT)  
Per Hour\***



### Features

- High-power electromagnetic drive with rare earth armature
- No wear, rotating or sliding parts
- Ideal for head load applications below hoppers
- Energy efficient AC operation
- Standard and custom engineered tray designs for your specific application
- Optional abrasion resistant steel, chrome carbide or UHMW liners
- Available for base or suspension mount, suspension shown above
- Solid-State controls offer variable speed precise feed rate control with accelerometer feedback for added protection



The 100B-HC High Capacity Electromagnetic Vibratory Feeder offers a nearly 100%\* greater capacity than the previous model. It features a drive and electromagnetic coil design with a stronger Rare Earth permanent magnetic armature assembly.

Now boasting the widest capacity range in the industry, the 100B-HC will feed controlled amounts from a few kilograms to 894 tons (798 mt) of bulk material per hour\*. This rugged electromagnetic feeder is ideal for metering material to belt conveyors, screens, crushers and elevators.

Ask about special trays used with screens and grizzlies. Optional dust covers, abrasive liners and more are offered. Available as an under-mount or overhead drive with either base or suspended mounting.

### Electrical Requirements & Typical Voltages: Single Phase

Voltage	Freq.	Amps
460	60	32
575	60	25.7
380	50	31.5
415	50	22

# 100B-HC High Capacity Electromagnetic Vibratory Feeder

## Superior Drive Design

Eriez unique AC drive applies power on both the forward and reverse direction of the feeder tray, giving superior linearity and control compared to an attract-release design.

The electromagnetic coil and rare earth armature are a proven design that requires minimal maintenance and extends the life of the feeder.

The simplicity of Eriez drive powered by alternately opposing and attracting magnetic forces assures low maintenance and accurate feeding. There are no sliding or rotating parts, power consumption is low and installation is easy.

The enclosed drive assembly is dust and moisture resistant which extends coil life.

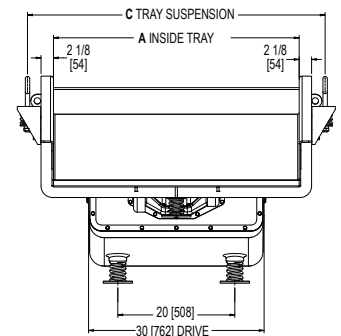
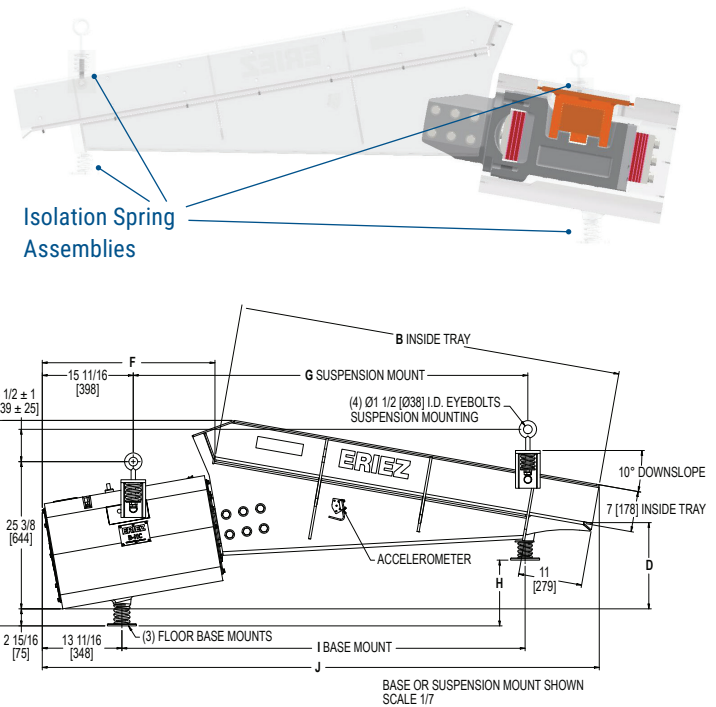
## Variety of Trays

In addition to the wide variety of standard trays, special trays such as tubular, covered, screens and various liners, etc., are available.

## Standard Tray Options

SIZE		A	B	C	D	E	F	G	H	I	J
24x96	in	24	96	32-7/8	12-7/8	38-5/8	16-5/16	81-1/8	9-13/16	82-5/8	112-1/16
610x2438	mm	610	2438	835	326	980	414	2060	250	2098	2846
30x84	in	30	84	38-7/8	13-1/8	36-3/4	17-9/16	74-1/2	9-3/8	76	101-1/2
762x2134	mm	762	2134	987	333	934	446	1893	239	1931	2579
36x72	in	36	72	44-7/8	14-1/2	36-1/16	26-5/16	68-15/16	11-1/4	70-7/16	98-7/16
914x1829	mm	914	1829	1140	368	917	668	1751	285	1789	2400
42x66	in	42	66	50-7/8	14-7/8	35-3/8	29-3/4	68	11-5/16	69-7/16	95-15/16
1067x1676	mm	1067	1676	1292	337	899	756	1727	288	1785	2437
48x60	in	48	60	56-7/8	15-1/8	34-5/8	29-7/8	63-11/16	11-15/16	65-3/16	90-3/16
1219x1524	mm	1219	1524	1445	384	879	759	1618	288	1655	2291

\*Capacity is based on dry sand weighing 100 lb/cu ft (1600 kg/cu m) with a 48 x 60 inch (1219x 1524 mm) trough at a 10° downslope, and skirt boards included on hopper for maximum material depth of flow. Dimensions are approximate, drawing is available for installation.



## Unicon-HC Controls

Compact AC controls regulate feeder speed by varying applied voltage and are available for automated operation.

- Accepts 4-20 ma signal
- Remote On/Off
- CE, UL and CUS tagged
- 115, 230, 380, 460 and 575 Volt & 50 or 60 Hz options
- Accelerometer feedback, 15-meter cable (49 ft.)
- Voltage regulation for precise feed rate control
- Nema 4 enclosure or chassis mount



**ERIEZ**  
GLOBAL LEADER IN SEPARATION TECHNOLOGIES

### HEADQUARTERS

2200 Asbury Road • Erie, PA 16506-1402 U.S.A.  
+1-814-835-6000 • [eriez@eriez.com](mailto:eriez@eriez.com)  
[www.eriez.com](http://www.eriez.com)



Manufacturing Facilities: AUSTRALIA • BRAZIL • CANADA • CHILE • CHINA • GERMANY • INDIA • JAPAN • MEXICO • PERU • SOUTH AFRICA • UNITED KINGDOM • UNITED STATES

©2024 Eriez Manufacturing Co. All Rights Reserved.

ECP-VMB-312-2P-Web-112024