

# ERIEZ



## LIGHT & MEDIUM DUTY FEEDERS

VOLUMATIC FEEDERS • SCREENERS • CONTROLS • SPARE PARTS



**ERIEZ**  
GLOBAL LEADER IN SEPARATION TECHNOLOGIES

## About Eriez

Established in 1942, Eriez stands as a pioneering force in separation technologies, embodying a truly global presence.

With 12 wholly owned subsidiaries spread across the globe, we proudly design, manufacture, and support our magnetic separation, flotation, metal detection, and material handling equipment on an international scale.

Our dedicated team of knowledgeable and experienced sales engineers collaborates closely with customers, understanding their unique challenges to deliver dependable, high-performance equipment, systems, and solutions.

Whether clients require our standard equipment or bespoke solutions tailored to their precise specifications, Eriez delivers.

Drawing from more than 80 years of experience across diverse industries, including mining and minerals processing, food processing and packaging, aggregates, metals recycling, and many other sectors, Eriez leverages its extensive experience to design and supply products that elevate productivity, efficiency, and product purity.

Eriez remains steadfast in its commitment to setting the global standard for excellence in key technologies, driving innovation and reliability across industries worldwide.

# Models A & C Vibratory Feeders

These compact vibratory feeders accurately feed and control material flows at rates ranging from spoonfuls to, nearly 45 tons (5 MT) per hour. AC operated, electromagnetic drives consume up to 60% less energy than DC drives and have no rotating parts to wear out.

## Features

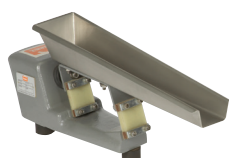
- Low profile
- Precise, linear feed control from 0-100% of capacity
- Standard and custom tray configurations
- Energy efficient full wave AC design on most models
- 60% energy savings over half-wave designs
- No wear parts
- Able to support significant material load
- 115, 230 V operation - 460 V available for most models
- 50 or 60 Hz operation - 3000 or 3600 VPM



## Available

- CSA and CE approval
- Sanitary wash down designs
- Solid-state controls with multiple features and Nema 12, 4 and 4X enclosures
- Hazardous environment models (Class II, Division 1, Group F and G)
- High temperature models available for applications ranging from 130 to 300°F (54 to 150°C)

**Model 6C**



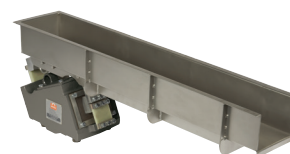
**Model 15A**



**Model 26C**



**Model 36C**



**Model 46C**



**Model 56C**



**Model 66C**



**Model 76C**



Feeder Model	Feeds up to 1600 lbs/727 kgs per hour	Feeds up to 2 tons/2 mt per hour	Feeds up to 4 tons/4 mt per hour	Feeds up to 7 tons/6 mt per hour	Feeds up to 15 tons/14 mt per hour	Feeds up to 20 tons/18 mt per hour	Feeds up to 25 tons/23 mt per hour	Feeds up to 43 tons/39 mt per hour
6C	X							
15A	X	X						
26C	X	X	X					
36C	X	X	X	X				
46C	X	X	X	X	X			
56C	X	X	X	X	X	X		
66C	X	X	X	X	X	X	X	
76C	X	X	X	X	X	X	X	X



## High-Speed (HS) Vibratory Feeders

Eriez AC operated Model HS High-Speed Feeders have been designed for the high speed feeding of light, bulky materials. They provide greater economy and efficiency in feeding and filling, and are ideal for use in conjunction with weigh scale and packaging machines. The units are light and functional and can be installed easily in small spaces. Model HS Feeders deliver up to .090 in. (2 mm) tray displacement at 3600 VPM. Increasing feed rates by 25%-40% and are ideal for rapid cycling applications.

### Features

- 25%-40% increase in feed rates
- Rapid on-off cycling
- AC Operation – 60% more efficient than DC models
- Revolutionary Tuning – accommodates a wide range of trays
- Spring System tolerates high deflections and rapid cycling without early failure
- Quick Stopping – rapid de-energizing elastomeric spring
- Feed rate is easily adjusted by Eriez' variable solid-state controller
- Easily adaptable for a greater variety of tray sizes and weights



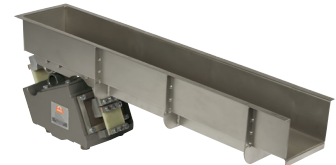
**Model HS-10**



**Model HS-26**



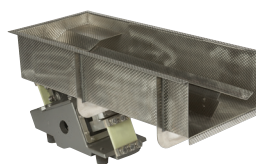
**Model HS-36**



**Model HS-46**



**Model HS-56**



**Model HS-66**



Feeder Model	Feeds up to 80 cu ft/2 m3 per hour	Feeds up to 120 cu ft/3 m3 per hour	Feeds up to 200 cu ft/6 m3 per hour	Feeds up to 365 cu ft/10 m3 per hour	Feeds up to 400 cu ft/11 m3 per hour	Feeds up to 600 cu ft/17 m3 per hour
HS-10	X					
HS-26	X	X				
HS-36	X	X	X			
HS-46	X	X	X	X		
HS-56	X	X	X	X	X	
HS-66	X	X	X	X	X	X

## High-Deflection (HD) Vibratory Feeders

High-Deflection Vibratory Feeders combine higher deflection of up to 3/16-inch (5 mm) and the lower frequency (30 cps) advantages of a mechanical feeder with the trouble-free service of an electromagnetic feeder.

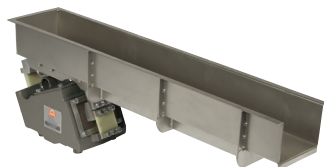
The patented electromagnetic drive uses rare earth magnetic technology to produce a large displacement and low power consumption (25% of normal electromagnetic drives). This revolutionary drive has an operating frequency of 30 Hz and imitates the motion of a mechanical vibrating feeder with the control of an electromagnetic feeder. All units are enclosed making them dust and moisture resistant. Dust-tight and epoxy-coated units are available. Epoxy-encapsulated coil and magnet eliminate coil movement, extending trouble-free coil life. Fiberglass springs give long spring life and are not subject to corrosion. Units are base mounted, and the feeder base comes with rubber isolation mounts. Trays are available in mild steel and stainless steel.

### Features

- AC Operation – 60% more efficient than DC models
- Revolutionary Tuning – accommodates a wide range of trays
- Spring System tolerates high deflections without early failure
- Quick Stopping – elastomeric spring rapid de-energizing
- Easily handle powders and leafy products that normally could not be fed in an electromagnetic feeder



#### Model HD-36 & HD-36C



#### Model HD-46 & HD-46C



#### Model HD-56 & HD-56C



#### Model HD-66 & HD-66C



#### Model HD-76C



Feeder Model	Feeds up to 150 cu ft/9 m3 per hour	Feeds up to 400 cu ft/11 m3 per hour	Feeds up to 500 cu ft/14 m3 per hour	Feeds up to 700 cu ft/20 m3 per hour	Feeds up to 1400 cu ft/40 m3 per hour
HD-36 & HD-36C	X				
HD-46 & HD-46C	X	X			
HD-56 & HD-56C	X	X	X		
HD-66 & HD-66C	X	X	X	X	
HD-76C	X	X	X	X	X

# Volumatic Feeder Machines (VMF)

Eriez Volumatic Feeder Machines provide the dual vibratory action of an electromagnetic feeder and bin vibrator to assure the proper flow of dry bulk material for measured discharge rates. These one-piece, compact, rugged assemblies are ideal for use in conjunction with weigh scales, packaging and bagging equipment, small batch operations, and where additive feeding is being performed either continuously or intermittently. Each Volumatic Feeder Machine has been designed in size, shape and vibratory action to give you the most efficient precision feeding possible.

## Features

- Available in two sizes, with variable speed rates
- Specially constructed units for installation in those areas where Class II, Group G equipment is normally used



Feeder Model	Feeds up to 2 tons/2 mt per hour	Feeds up to 12 tons/11 mt per hour
VFM 15-1-20	X	
VFM 56-4-30	X	X



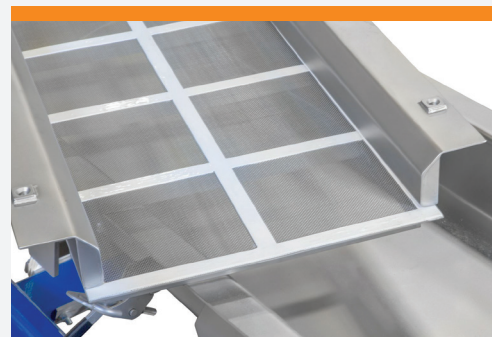


## Options: Screeners, Controls & Spare Parts

### Screeners

**Model A, C, HS, HD**

- Custom sizes
- High frequency
- Low amplitude
- Ideal for fine mesh separation



### Controls

Eriez controls accommodate the vast majority of industry applications. Eriez' full or half wave, operation capability allows a plant to operate one control while competitive units provide half wave operation only.

**Three Control Options:**

- Unicon
- Unicon HC
- G Series



### Spare Parts

Spare Parts kits are available for our 15A thru 76 model compact vibratory feeders. These kits include everything needed to rebuild a compact feeder drive in a typical shut-down/emergency situation.

**Kits Include:**

- Corded electrical assembly
- Diaphragm
- Shock mounts
- Elastomers (HS and HD versions)
- Tuning springs (front and back)
- Spacers
- Associated hardware



# ERIEZ

GLOBAL LEADER IN SEPARATION TECHNOLOGIES

## HEADQUARTERS

2200 Asbury Road • Erie, PA 16506-1402 U.S.A.  
+1-814-835-6000 • [eriez@eriez.com](mailto:eriez@eriez.com)  
[www.eriez.com](http://www.eriez.com)

*Note: Some safety warning labels or guarding may have been removed before photographing this equipment. Eriez, Eriez Flotation and Eriez Magnetics are registered trademarks of Eriez Manufacturing Co., Erie, PA.*

©2024 Eriez Manufacturing Co. All Rights Reserved.



**Australia**  
Epping, Victoria  
+61 3 8401 7400



**Brazil**  
Belo Horizonte, Minas Gerais  
+55 31 3281 9108



**Canada**  
Delta, British Columbia  
+1 604-952-2300



**Chile**  
Las Condes, Santiago  
+56 2 29523400



**China**  
Qinhuangdao and Tianjin  
+86-22-8390-4608



**Germany**  
Recklinghausen  
+49 (0)160 94179313



**India**  
Athipet, Chennai  
+91-044-2652-5000



**Japan**  
Urayasu, Chiba  
+81-47-354-6381



**Mexico**  
Querétaro, Tlalnepantla  
+52 555 321 9800



**Perú**  
Surco, Lima  
+51 1 719 4150



**South Africa**  
Boksburg, Gauteng  
+27-11-444-9160



**United Kingdom**  
Bedwas, Caerphilly  
+44-29-2086-8501



**United States**  
Erie, Pennsylvania  
+1-814-835-6000