

X8-C Metal Detector Upgrade Kit

The Eriez X8-C Metal Detector Upgrade Kit is a powerful, “drop-in” system for converting existing Eriez Xtreme® metal detectors to our X8 technology. The X8-C delivers the features of the X8 without the need to alter or replace your conveyor, liquid line, vertical drop, or other system integrations. With identical shell dimensions to the Xtreme, installation is fast, seamless, and cost-effective.

Features

- Larger touchscreen interface with capacitive display designed for intuitive use
- Faster, more accurate processing with next-generation electronics
- 304 stainless steel construction designed for IP69 washdown conditions
 - Optional 316 SS available
- Built-In Connectivity: Web User Interface Technology (replacing SMART Link) included
 - Wi-Fi Bridge available
- 18-month warranty from installation (not to exceed 24 months from ship date)

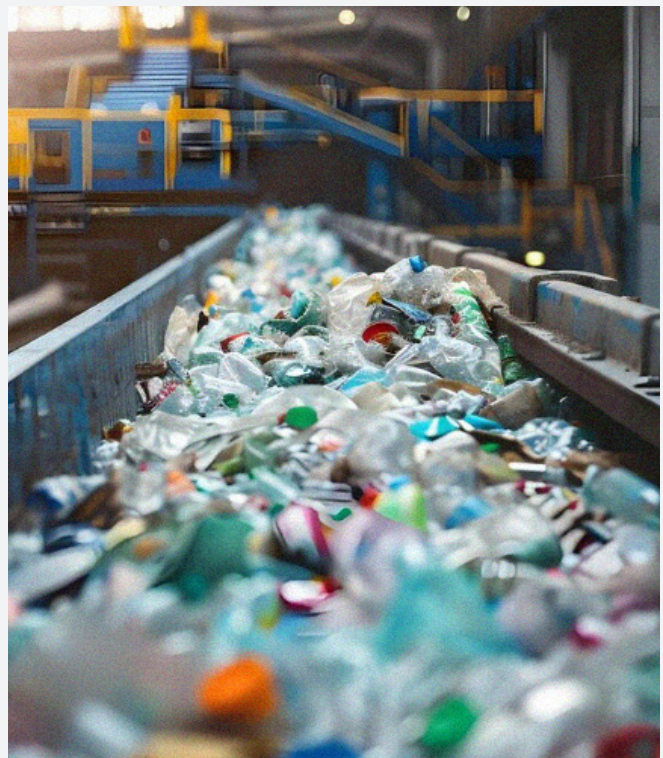
Specifications

Technology	Languages	Wash-down
Balanced Coil Design	English Spanish	IP69 and NEMA 4X/PW (80°C (176°F) water at 100 bar (1450PSI)



Advantages

- Update existing Xtreme electronics with minimum downtime and no mechanical modifications
- Same physical footprint to work with already-integrated conveyors and flow systems
- Plug-and-Play Installation: Direct mechanical replacement for Xtreme with no mechanical modifications needed



X8-C Metal Detector Upgrade Kit

Outputs

There are nine total outputs, each with one set of contacts. There are four programmable "Form C" (NO-C-NC) relay outputs rated at 5A up to 250 VAC, 30 VDC each.

- Reject (K1)
- Relay 1 (K3)
- Relay 2 (K2)
- Relay 3 (K4)

All four relays are fail-safe wired; if power is lost, the relays will switch to the activated position.

Inputs

Eight configurable inputs set to "Active High or Low"

- Input Voltage
 - "High" = 10 to 30 VDC
 - "Low" = 0 to 0.9 VDC
- Input Impedance = 2.8k Ω
- Current Requirement = 3 to 10 mA

Ambient Temperature Range

- Integral Control -10°C (14°F) to 49°C (120°F)
- Remote Control -10°C (14°F) to 54°C (130°F)

Storage Temperature

- -10° C (14° F) to 80° C (176° F)



Software Detail

- Verification check confirms test piece challenges and encourages operator testing
- Continuous diagnostics monitor parameters and alert operators for events
- Product management navigates between customized user presets
- Four-level password protections to protect critical settings
- Auto Tune corrects any imbalances for optimized detection
- Event and Reject Logs record automatic audit trail

Power Requirements

The X8-C Metal Detector will operate from AC supply voltages over the range of 100 to 240 VAC RMS, 50 or 60 Hz. Main supply voltage fluctuations shall not exceed $\pm 10\%$ of the nominal value.

ERIEZ
GLOBAL LEADER IN SEPARATION TECHNOLOGIES

HEADQUARTERS

2200 Asbury Road • Erie, PA 16506-1402 U.S.A.
+1-814-835-6000 • eriez@eriez.com
www.eriez.com

